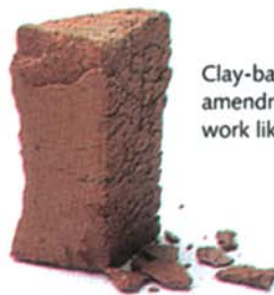


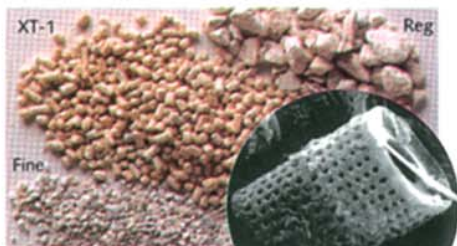


AXIS manages air and water like a sponge that holds its shape.



Clay-based amendments work like a brick.

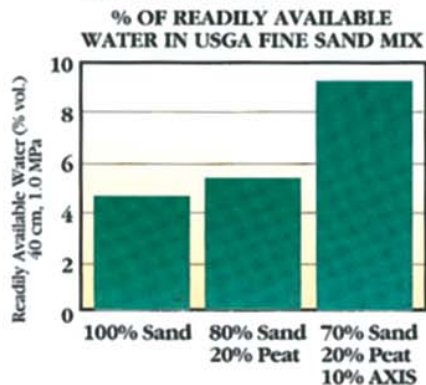
## Specify AXIS, the soil amendment that lets you manage air and water in the root zone 4 times better than clay.



### Pore Sizes Designed by Nature to Absorb and Release Water.

AXIS gives you more leeway managing the delicate air/water balance in turf root zones. You see, in soil amendments water can't enter and release easily when internal pores are too small. Only AXIS comes from a unique American source of diatomaceous earth, comprised of the ancient remains of microscopic sea organisms with internal pores naturally sized to accommodate water movement.

*Ohio State University testing showed AXIS increases both readily available water and water retention in USGA root zone mixture, while increasing permeability in most cases.*



### AXIS vs. Clay Amendments.

AXIS is very different from clay-based soil amendments. Clay treated to make larger pore sizes can't stand up to freeze/thaw cycles. It turns to mush. When clay is treated to last longer, it creates pore sizes too small to release water that benefits turf. AXIS is designed by nature to last indefinitely.

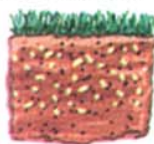
**% OF PARTICLE PORE SIZES BETWEEN .1 AND 1 MICRON, GOOD FOR WATER MOVEMENT**



*Independent tests show 80% of the internal pores within AXIS are suitable for absorbing and releasing water at normal pressure levels. The pores in clay products can hold water so tightly it's like trying to water plants with a damp brick.*

### Non-Compacting and Stable, AXIS Aerates Soil While Providing a Firm Surface.

Water coming and going into AXIS particles brings air into the soil, and, unlike polymers, it is stable and does not change shape. The lower bulk density of AXIS, less than half the weight of sand, provides the ideal



*AXIS won't compact; promotes root growth.*

soil environment for the easy movement of air, helping prevent anaerobic soil better than clay-based amendments.

### Proven in the Lab and in the Field.

AXIS has made it much easier for many superintendents to manage the air/water balance in turf. For new construction, greens renovation and topdressing applications with core aeration, the results are real and very cost-effective.



### Ask for Your Free AXIS Fact Kit.

You'll find case studies, independent testing reports from the best in the business, and end-user references. Call today for information and your local dealer

**1-800-270-TURF**

**AXIS™**  
EMPEROR'S SOLUTION

Distributed nationally by  
**AGRO-TECH 2000 Inc.** PLAINSBORO, NJ  
Manufactured by Eagle-Picher Minerals, Inc. Reno, Nevada